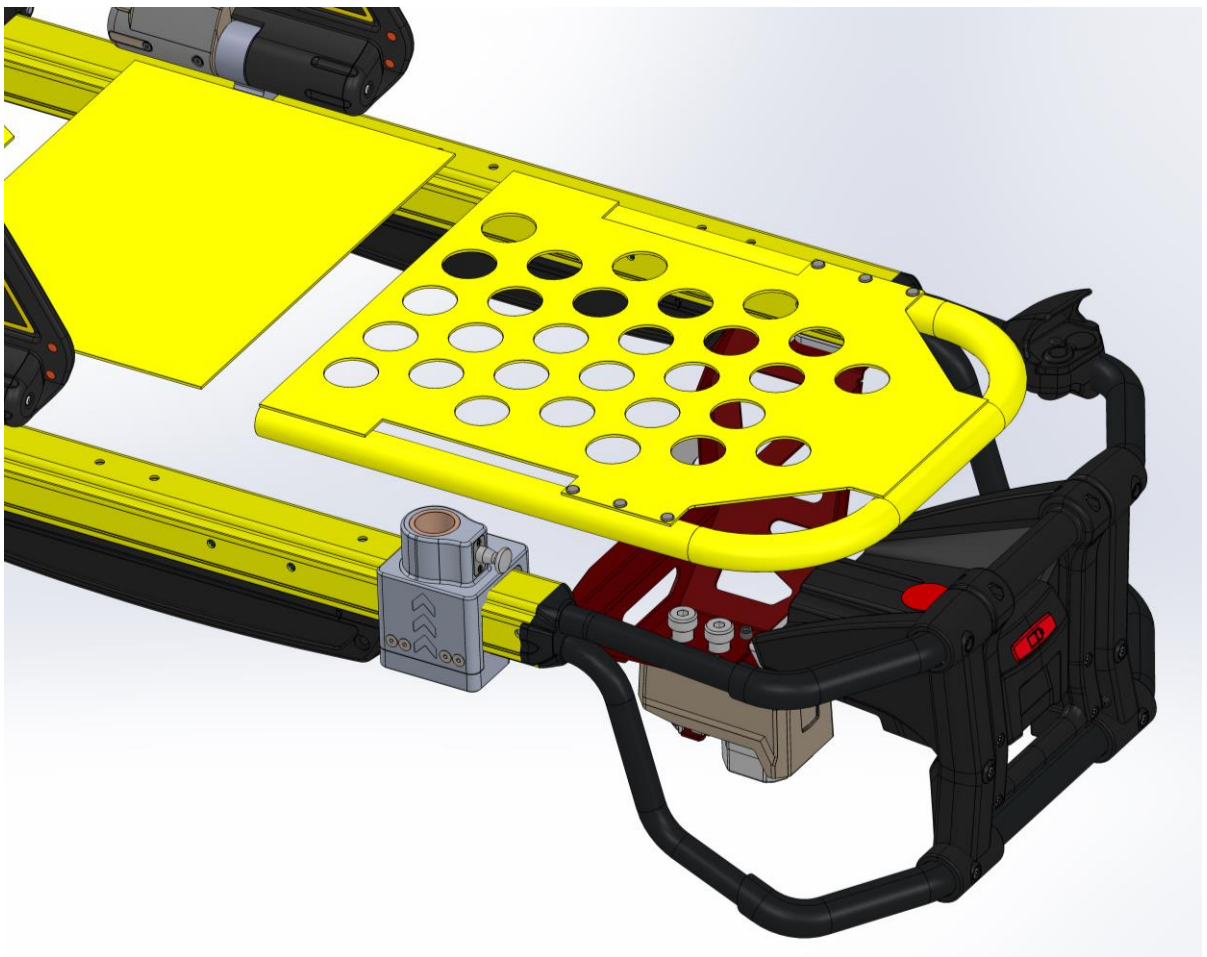


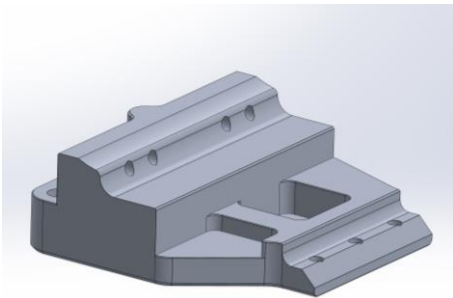
R-606089 Equipment Mounting Block Install Instructions



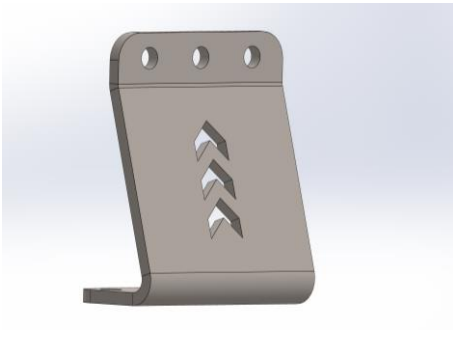
Parts



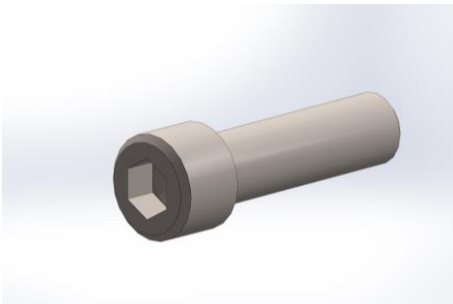
1x
Top Half



1x
Bottom Half
R-801059



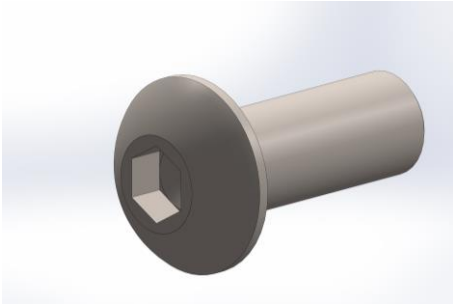
1x
Back Bracket
R-801033



2x
SHCS
R-102222



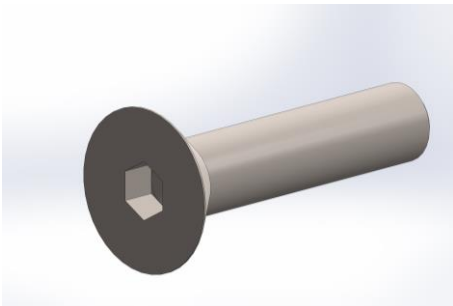
Parts



6x

Button Head Screw

R-102224



4x

Flat Head Screws

R-102223

Tools

Torque Screwdriver

3/16" Allen Drive Bit

1/8" Allen Drive Bit

Loctite 243

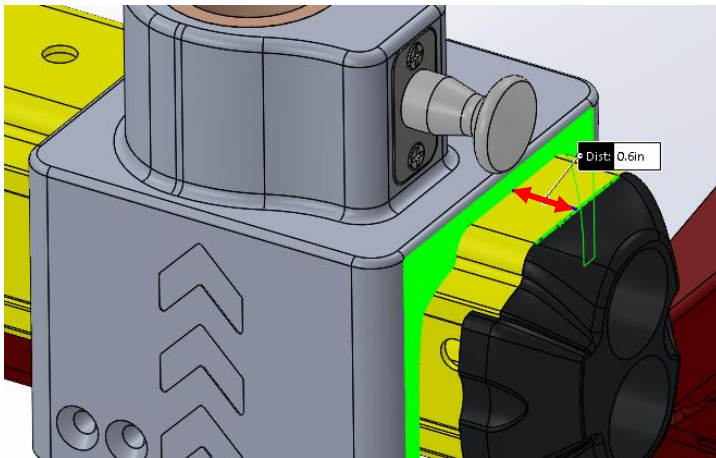
Important

DO NOT USE A POWER TOOL TO START SCREWS

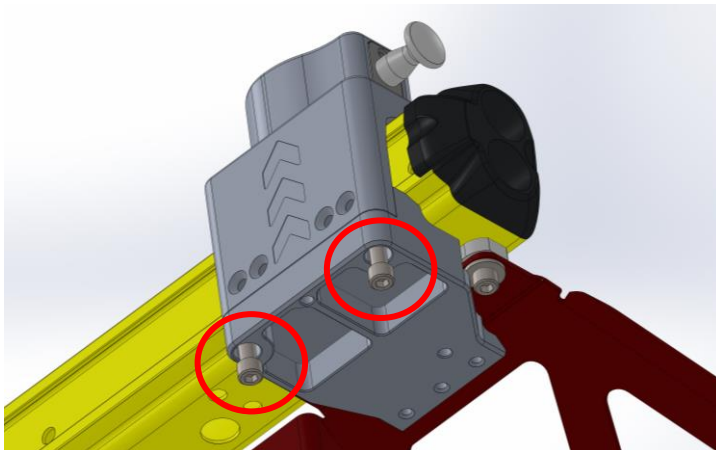
Install



Place the top half on the patient right side of the cot at the foot end.



Position the side of the top half 0.6" from the end of the frame rail as shown.



Apply Loctite to SHCS.

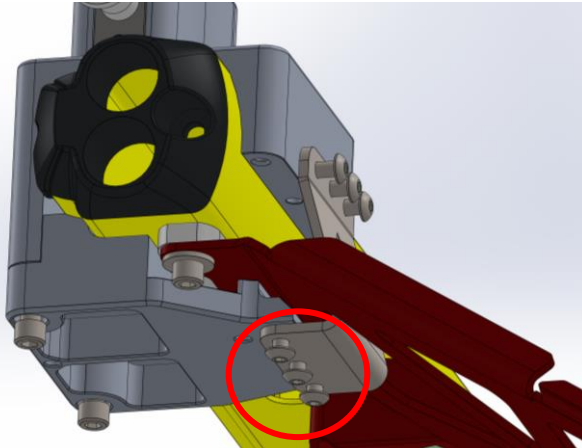
Place bottom half on cot.

Install SHCS 3 turns.

After this point the installation must be completed within 4 minutes.

NOTE: DO NOT USE A POWER TOOL TO START SCREWS

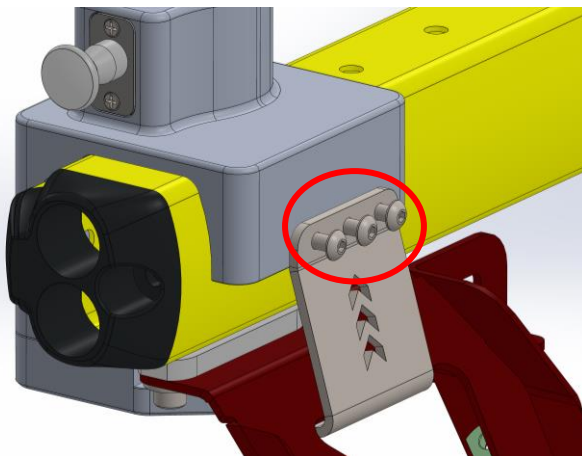
Install



Apply Loctite to 3 button head screws.

Place back bracket on and install 3 button head screws, leave screws 1/8" out.

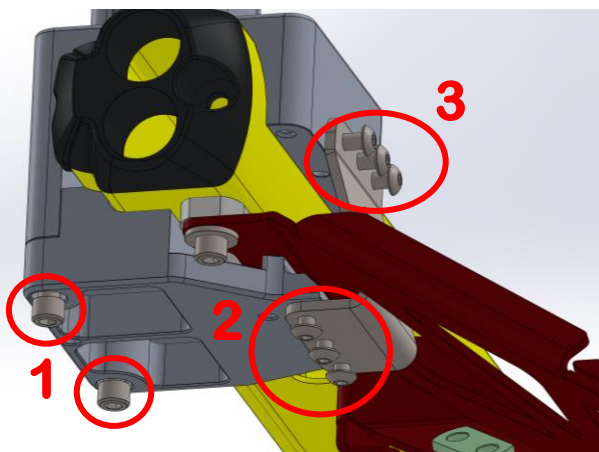
NOTE: DO NOT USE A POWER TOOL TO START SCREWS



Apply Loctite to 3 button head screws.

Install 3 button head screws, leave 1/8" out.

NOTE: DO NOT USE A POWER TOOL TO START SCREWS



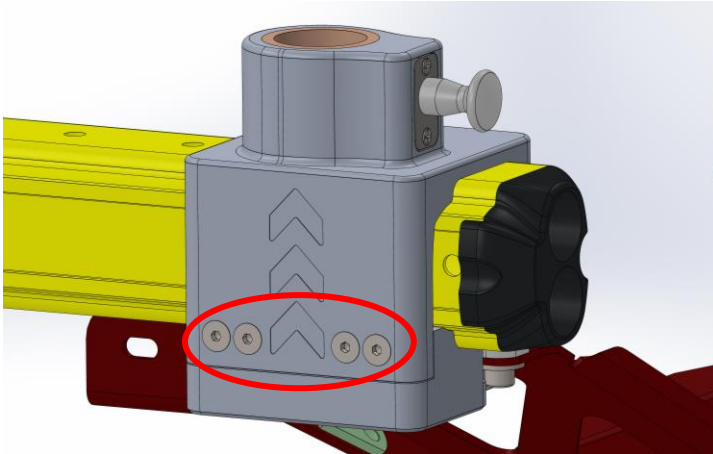
Tighten fasteners in the order indicated in the image to the left.

1/4" fasteners (group 1) should be torqued to 80 in-lbs.

10-32 fasteners (group 2 and 3) should be torqued to 40 in-lbs.



Install



Apply Loctite to 4 flat head screws.

Install front flat head screws and torque to 40 in-lbs.

NOTE: DO NOT USE A POWER TOOL TO START SCREWS

