

# R-105054 Isolette Deck Kit for Stryker IT Cot



## Parts



**10x R-102158**

**1/4" x 1/2" Button Head**



**12x R-102159**

**1/4" x 3/4" Button Head**



**4x R-102160**

**10-32 x 1/2" Button Head**



**8x R-102161**

**10-32 x 3/4" Button Head**



## Parts



**4x R-102162**

**5/16" x 1.25 Button Head**



**4x R-102163**

**1/4" Jam Nut**



**16x R-102164**

**1/4" Flat Washer**



**12x R-102165**

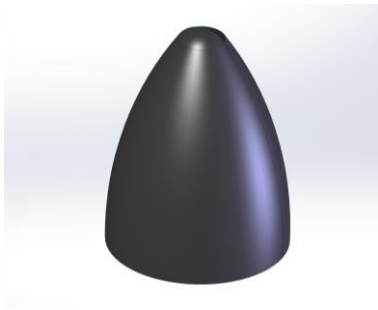
**#10 Flat Washer**



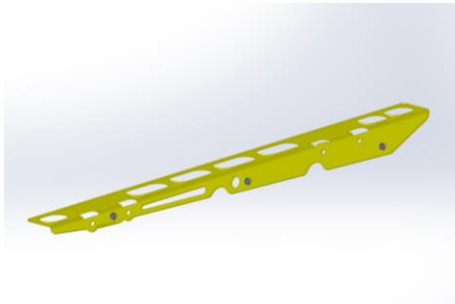
## Parts



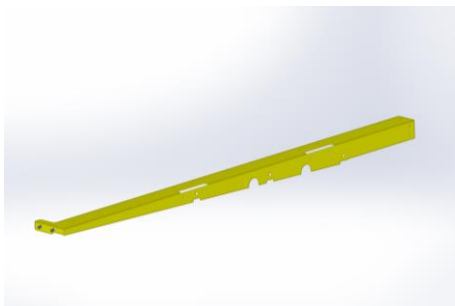
**4x R-102166**  
**5/16" Flat Washer**



**4x R-400106**  
**Rubber Bumper**



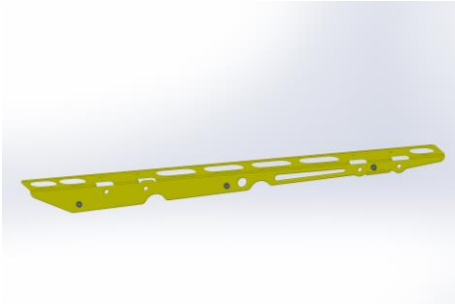
**1x R-800494**  
**Right Inner Side Rail**



**1x R-800495**  
**Right Outer Side Rail**

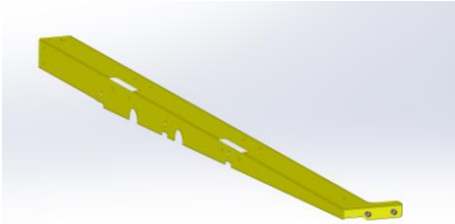


## Parts



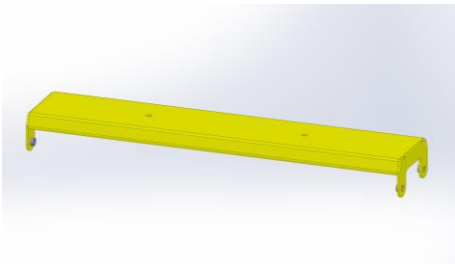
**1x R-800496**

**Left Inner Side Rail**



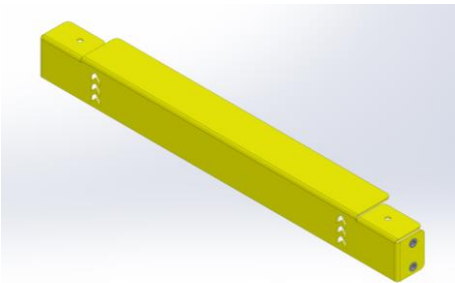
**1x R-800497**

**Left Outer Side Rail**



**2x R-800498**

**Cross Bar**

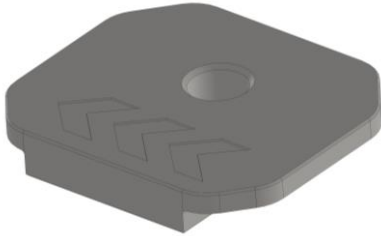


**1x R-800499**

**Head Section**



## Parts



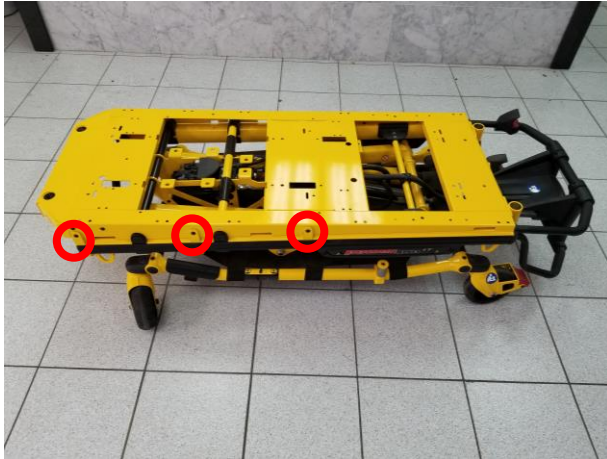
**4x R-800500**

**Threaded Plate**





1



Remove fasteners indicated by the red circles in existing deck.

Do the same to the left side.

2



Remove fasteners indicated by the red circles in existing deck.

Remove existing deck.

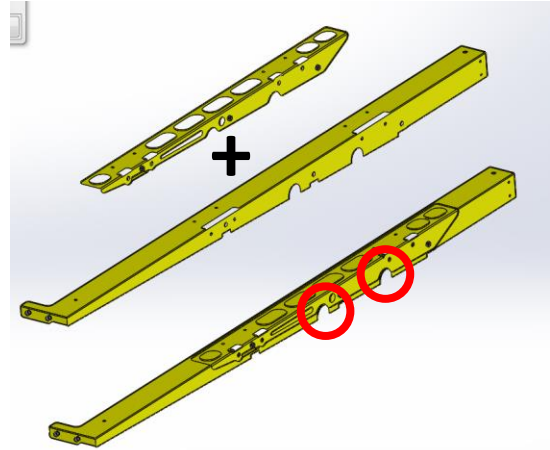
3



Mount R-400106 Bumper to R-800495 Right Outer Side Rail using 1 R-102158 ¼ x ½ Button Head.

Do the same for the Left Outer Side Rail R-800497.

4



Place the R-800494 Right Inner Side Rail inside the R-800495 Right Outer Side Rail. Make sure the cut outs indicated by the red circles are aligned.

Do the same for the other side with the R-800496 Left Inner Side Rail inside the R-800497 Left Outer Side Rail.



5



Mount the Right Outer and Inner Side Rails to cot with R-102158 ¼ x ½ Button Head Screws where indicated with red circles. Do not tighten fasteners.

Do the same to the left side.

6



Mount the Right Outer and Inner Side Rails to cot with R-102164 ¼ flat washers and R-102159 ¼ x ¾ Button Head Screws where indicated with red circles. Do not tighten fasteners.

Do the same to the left side.

7



Mount the R-800499 Head Section and R-400106 Bumper to the Outer Side Rails using R-102165 #10 flat washer and R-102160 10-32 x ½ Button Head where indicated with the blue circles. In the red circle use a R-102164 ¼ Flat Washer and R-102158 ¼ x ½ Button Head for the Bumper. Do the same for the other side. Do not tighten any fasteners.

8



Mount the two R-800498 Cross Bars using a R-102164 ¼ Flat Washer and R-102159 ¼ x ¾ Button Head where indicated with a red circle. Do not tighten any fasteners.





9



Finish attaching the R-800498 Cross Bars with a R-102165 #10 Flat Washer and R-102161 10-32 x 3/4 Button Head in the 2 locations indicated with the blue circle. Do this on both sides of both Cross Bars.

10



Tighten all fasteners on the deck.

11



Place isolette on top of the Cross Bars and insert the R-800500 Threaded Plate into the mounting locations on the isolette. Secure the isolette with a R-102166 5/16 Flat Washer and R-102162 5/16 x 1.25 Button Head.

Add a R-102163 5/16 Nylock Jam Nut on top of the threaded plate to secure it.

